

# Design 2.0

Dry Gas Coupling



ART.NO. XB43 VERSION: 240409

# MannTek

# DESIGN 2.0

## - A NEW STATE OF THE ART DGC

### **New Design Language**

- Design based on handling and ergonomics
- Integrated shape of body, handles and bumper
- Bumper with guidance covering the roll axes
- Detail finish by new manufacturing methods
- Cylindrical handle interface reduces volume

### **New Market Leading Performance**

- Up to 45% improved flow capacity
- Up to 40% reduction of coupling force
- Leading user ergonomics through force reduction and optimized handle design

### **Major Customer Benefits**

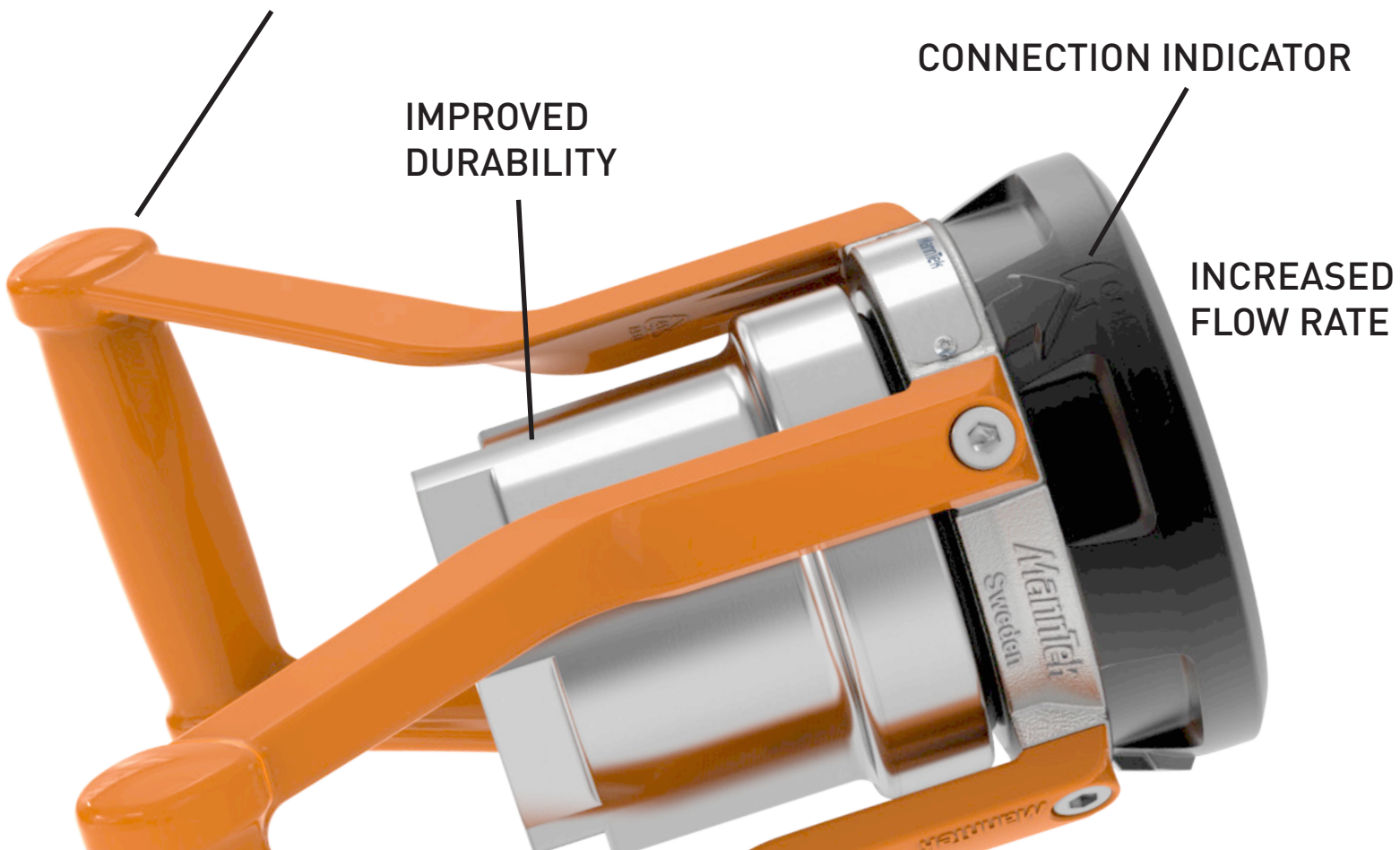
- More convenient handling with reduced stress on muscles and joints
- Improved flow rate means shorter loading time and reduced energy consumption
- Increase of durability, through force reduction and new materials
- MannTek's easy-to-service design kept unchanged!

OPTIMIZED ERGONOMICS

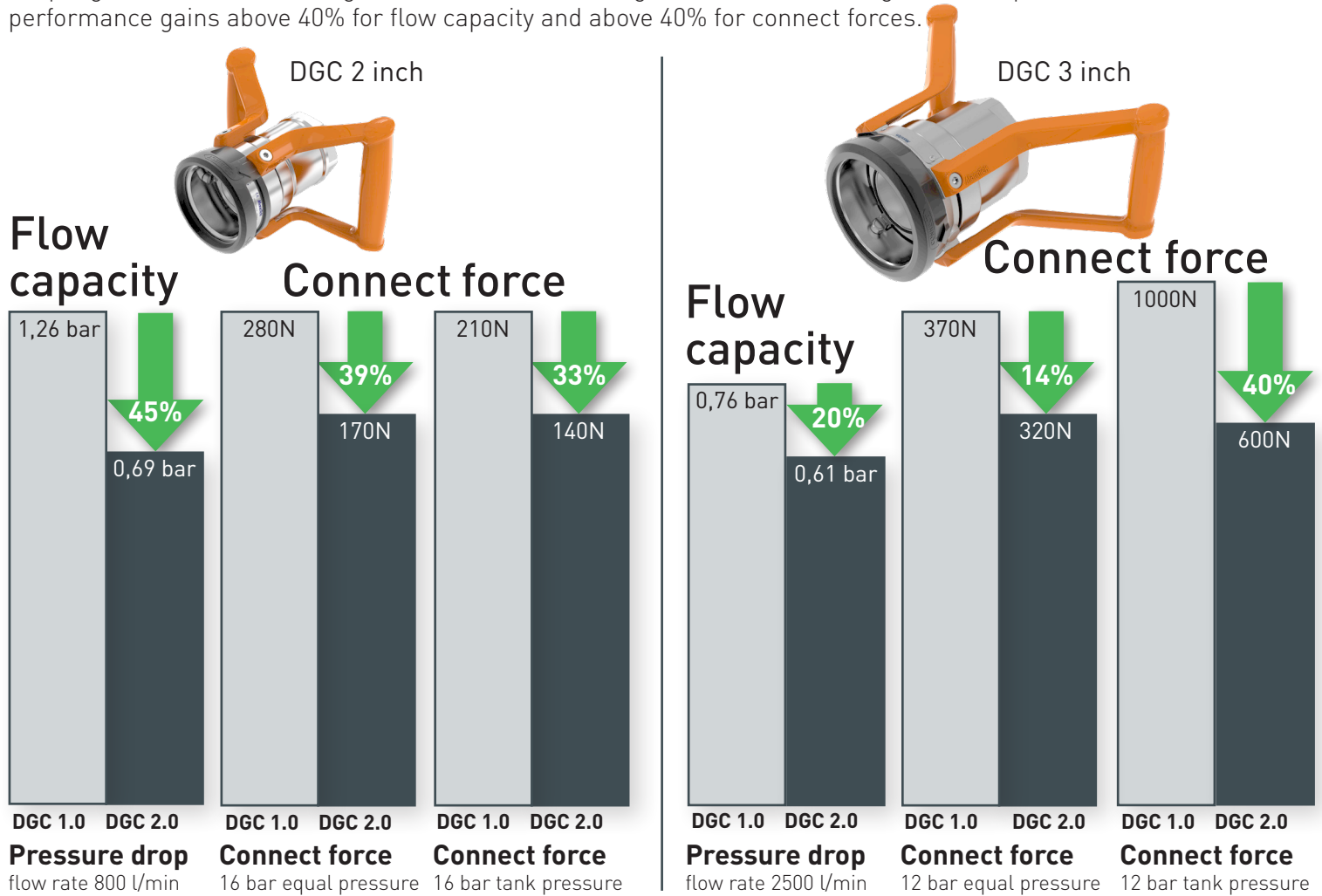
IMPROVED  
DURABILITY

CONNECTION INDICATOR

INCREASED  
FLOW RATE



This diagram illustrates the performance improvements, measured in percentages, between our established coupling 1.0 and the new Design 2.0. The enhanced design has resulted in a significant improvement, with performance gains above 40% for flow capacity and above 40% for connect forces.



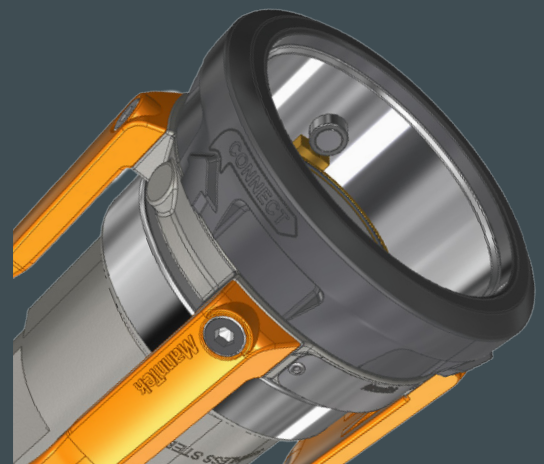
## INTEGRATED PRODUCT DESIGN FOR SUPREME PERFORMANCE AND HANDLING

With experience of more than one million couplings delivered over 25 years, MannTek decided to set a new standard for DGC couplings. The Original Design 1.0 is known for its highly competitive performance and is well-regarded worldwide. The new Design 2.0 is a careful evolutionary redesign, based on results from field studies and user tests.

With Design 2.0 both flow capacity and user ergonomics have been improved to a new state of the art level. The flow capacity is increased above 40% through design optimisation, and has been verified in a number of incremental flow rate simulations.

The ergonomics are improved on a number of points:

- Clear visual indicators for easier alignment
- Connect forces reduced up to 40%
- New handle design offers a more convenient, balanced and effective handling, beside a more compact rotation volume
- Design 2.0 offers more optional feature combinations like sensors, locking device, stop before disconnect etc.





# MannTek

**Phone** +46 501 39 32 00  
**E-mail** sales@manntek.se  
**Website** www.manntek.se  
**Address** Mann Teknik AB  
 Strandvägen 16  
 S-542 39 Mariestad  
 Sweden

**Sales office**  
 Argentina  
 Germany  
 Netherlands  
 Spain  
 United Arab Emirates  
 China  
 Great Britain  
 Sweden  
 India

## YOUR DISTRIBUTOR

## COMPANY APPROVALS



**ClassNK**

