

# 6"(Ø238 mm) Technical information

Tank unit / Adapter and Hose unit / Coupler



Material	Maximum working pressure	Test pressure	Minimum Burs Pressure
Aluminium	10 bar / 145 psi	15 bar / 218 psi	50 bar / 726 psi
Stainless Steel	16 bar / 232 psi	24 bar / 348 psi	80 bar / 1160 psi

## Connections

6" in BSP, NPT and Flanged inlet

## Applications

The 6" (Ø238 mm) is recommended for marine bunkering, ship to shore transfer, ship to ship transfer and ship to rig transfer or on any application where spillage needs to be minimized.

## Media

**Petroleum products:** Gasoline, diesel, oil etc.

**Chemical products:** Ethylene Oxide, Propylene Oxide, Acrylonitrile, Butadiene, Ammonia, Vinyl Chloride, Toluene, Xylene, Sulphuric Acid, Phenol etc.

**Dry powder**

## Material

Aluminium, Brass/Gunmetal, Stainless Steel, Hastelloy and PEEK. Other materials on request.

## Seals

Standard seals in FPM (Viton®), EPDM, Chemraz®, Kalrez®, NBR (Nitrile). Other materials on request.

## High Flow Rates / Low Pressure Drop

Allows maximum product transfer with minimal losses

## Recommended Maximum Flow Rates

4000 litres/minute (fuel)

## Selectivity

### - Avoid mixing products:

To avoid product contamination caused by connecting a hose unit to the wrong tank unit, selective versions of the hose and tank units are available. Each unit has a number of selective positions, designated by a coded part number according to the coupling size - specify when placing order.

## Interchangeability:

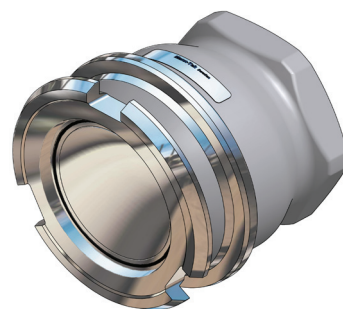
Compatibility with other existing brands, e.g. TODO-matic.

## Hose unit with Integrated Swivel

All hose units are designed with integrated Swivel

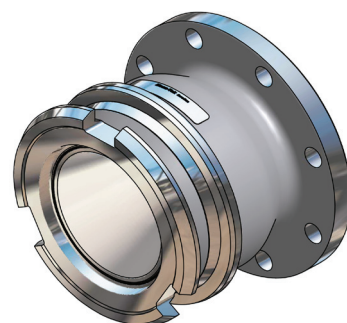
## 6" (Ø238 mm) Tank unit / Adapter - Female thread

Connection <sup>1A)</sup> Inch/DN	Body Material <sup>2)</sup>	Seal <sup>3)</sup>		Weight		Code No
		O-ring	Flat seal	kg	lbs	
F 6" BSP	AI	Standard: FPM/FKM (Viton®)	PUR (Vulkollan®)			T6110B1101B
F 6" NPT				7,1		T6111B1101
F 6" BSP	SS	Other on request	PTFE (Teflon®)	15,7		T6110B4401A
F 6" NPT				17,6		T6111B4401



## 6" (Ø238mm) Tank unit / Adapter, Flanged inlet

Flange <sup>1B)</sup>	Body Material <sup>2)</sup>	Seal <sup>3)</sup> O-ring	Weight		Code No
			kg	lbs	
DN 150 PN 10 / 16 Type A	AI	Standard: FPM/FKM (Viton®)	8,6		T645B1101
6" ANSI 150 psi			7,5		T6100B1101
DN 150 PN 10 / 16 Type B	SS	Other on request	22,4		T645B4401
6" ANSI 150 psi					T6100B4401



1A) Female thread BSP=ISO 228, NPT=ANSI B1.20.1

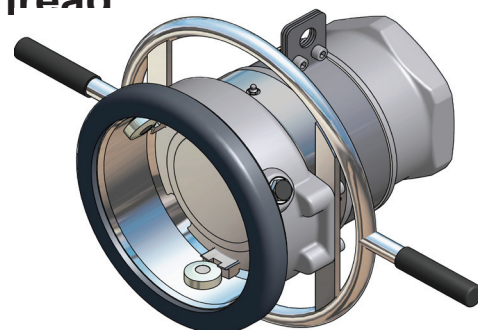
1B) Flanges according to EN 1092 , ANSI B16.5 and DIN 28459

2) Mtrl: AI=Aluminium, GM=Gun Metal, SS=Stainless Steel

3) Standard seal. Other on request.

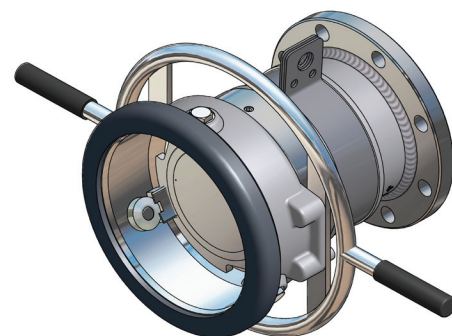
## 6" (Ø238 mm) Hose unit / Coupler - Female thread

Connection <sup>1A)</sup> Inch/DN	Body Material <sup>2)</sup>	Seal <sup>3)</sup>		Weight		Code No
		O-ring	Flat seal	kg	lbs	
F 6" BSP	AI	Standard: FPM/FKM (Viton®)	PUR (Vulkollan®)			S6110B1101B
F 6" NPT						S6111B1101
F 6" BSP	SS	Other on request	PTFE Teflon®			S6110B4401A
F 6" NPT				45		S6111B4401



## 6" (Ø238 mm) Hose unit / Coupler, Flanged inlet

Flange <sup>1B)</sup>	Body Material <sup>2)</sup>	Seal <sup>3)</sup> O-ring	Weight		Code No
			kg	lbs	
DN 150 PN 10 / 16 Type A	AI	Standard: FPM/FKM (Viton®)			S645B1101
6" ANSI 150 psi			25,9		S6100B1101
DN 150 PN 10 / 16 Type B	SS	Other on request			S645B4401
6" ANSI 150 psi			49,5		S6100B4401



1A) Female thread BSP=ISO 228, NPT=ANSI B1.20.1

1B) Flanges according to EN 1092 , ANSI B16.5 and DIN 28459.

2) Mtrl: AI=Aluminium, GM=Gun Metal, SS=Stainless Steel

3) Standard seal. Other on request.

Viton® (FPM) and Teflon® (FPM/KPM) are registered trademarks of DuPont, DuPont Elastomers. Vulkollan® is registered trademark of Bayer AG